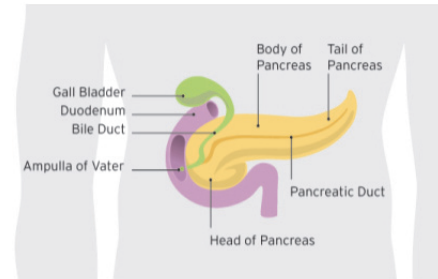




PANCREATIC CANCER FACTS 2014

- Pancreatic cancer is currently the fourth leading cause of cancer death in the United States, and is anticipated to become the second by 2020.^{1,2}
- Pancreatic cancer is one of the nation's deadliest cancers with a five-year relative survival rate of just 6 percent. An estimated 73 percent of patients will die in the first year of diagnosis.^{1,3}
- In 2014, an estimated 46,420 people will be diagnosed with pancreatic cancer in the United States, and approximately 39,590 will die from the disease.¹
- Based on the changing demographics of the U.S. population and changes in the incidence rate and death rate, the number of new cases of pancreatic cancer will increase more than 2-fold and the number of deaths will increase 2.4-fold by the year 2030.³
- Pancreatic cancer is the ninth most commonly diagnosed cancer in women and the eleventh most commonly diagnosed in men.¹
- Risk factors for developing pancreatic cancer include family history of the disease, age, chronic or hereditary pancreatitis, smoking, obesity and long-standing diabetes. These and other risk factors are still being investigated.
- Pancreatic cancer may cause only vague symptoms that could indicate many different conditions within the abdomen or gastrointestinal tract. Symptoms include pain (usually abdominal or back pain), weight loss, jaundice (yellowing of the skin and eyes), loss of appetite, nausea, changes in stool, and diabetes.
- The location of the pancreas deep in the abdominal cavity is a factor hindering early detection of pancreatic cancer.
- Surgical removal of the tumor is possible in only approximately 15 percent of patients with adenocarcinoma, the most common type of pancreatic cancer. Chemotherapy or chemotherapy with radiation may be offered before or after surgery.
- Chemotherapy or other drug therapies are typically offered to patients whose tumors cannot be removed surgically. The National Comprehensive Cancer Network's Guidelines for the treatment of pancreatic cancer states that clinical trials are the preferred option for treatment.
- There are complex biological features of a pancreatic cancer tumor that distinguish it from many other cancer types.
- High priority research areas being explored for pancreatic cancer include: identifying biomarkers for early detection using registries of patients with a family history of pancreatic cancer, developing drugs that target specific gene mutations, understanding how the tumor microenvironment alters drug delivery, and harnessing the immune system for the treatment of pancreatic cancer.



Sources for statistics:

- 1) American Cancer Society. *Cancer Facts & Figures 2014*. Atlanta: American Cancer Society; 2014
- 2) *The Alarming Rise of Pancreatic Cancer Deaths in the United States*, Pancreatic Cancer Action Network, 2012
- 3) Personal Communication, R. Siegel, American Cancer Society, Atlanta, January 29, 2013